



Correction to: Prevalence of vitamin D deficiency and its predictors in the Portuguese population: a nationwide population-based study

Catia Duarte^{1,2} · Helena Carvalheiro^{1,3} · Ana M. Rodrigues^{4,5} · Sara S. Dias^{4,6} · Andréa Marques^{1,7} · Tânia Santiago^{1,2} · Helena Canhão^{4,8,9} · Jaime Cunha Branco^{4,10} · José António Pereira da Silva^{1,2}

Published online: 2 April 2020

© International Osteoporosis Foundation and National Osteoporosis Foundation 2020

Correction to: Archives of Osteoporosis (2020) 15:36

<https://doi.org/10.1007/s11657-020-0695-x>

The original version of this article, published on 02 March 2020 unfortunately contained an error on “Fig. 3 Prevalence of Vitamin D Levels by NUTSII. The prevalence estimated values represent weighted values to the Portuguese Adult Population in 2011 [33], considering the study design.” The percentage of individuals with levels ≥ 20 ng/mL in Açores is 18% instead of 28%.

The corrected figure is given below.

The authors regret their error.

The online version of the original article can be found at <https://doi.org/10.1007/s11657-020-0695-x>

✉ Catia Duarte
catiacmduarte@gmail.com

¹ Department of Rheumatology, Centro Hospitalar e Universitário de Coimbra, Praceita Prof. Mota Pinto, 3000-075 Coimbra, Portugal

² Coimbra Institute for Clinical and Biomedical Research (iCBER)-Faculty of Medicine, University of Coimbra, Azinhaga Santa Comba, Celas, 3000-548 Coimbra, Portugal

³ Center for Neuroscience and Cell Biology, Faculdade de Medicina, University of Coimbra, Rua Larga, Pólo I, 1º, 3004-504 Coimbra, Portugal

⁴ EpiDoC Unit, CEDOC, NOVA Medical School, Universidade Nova de Lisboa (NMS-UNL), Rua Câmara Pestana, n.º 6, 6-A Edifício CEDOC II, 1150-082 Lisbon, Portugal

⁵ Faculdade de Medicina, Universidade de Lisboa, Avenida Professor Egas Moniz, 1649-028 Lisbon, Portugal

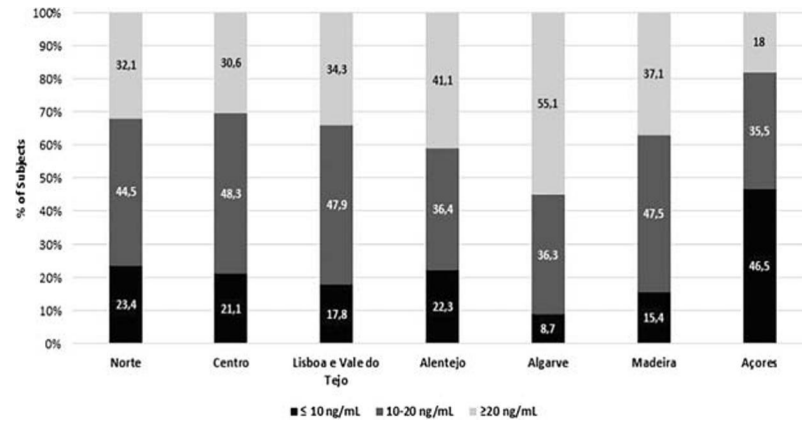
⁶ Center for Innovative Care and Health Technology (ciTechCare), Escola Superior de Saúde de Leiria (ESSLei), Instituto Politécnico de Leiria (IPLeia), Campus 2-Morro do Lena-Alto do Vieiro, Apartado 4137, 2411-901 Leiria, Portugal

⁷ Health Sciences Research Unit: Nursing Coimbra, Coimbra Nursing School, ESEnfc, Avenida Bissaya Barreto, Apartado 700, 3046-851 Coimbra, Portugal

⁸ National School of Public Health, Universidade Nova de Lisboa, Avenida Padre Cruz, 1600-560 Lisbon, Portugal

⁹ CHLC – Hospital Curry Cabral, Rua da Beneficência n.º 8, 1069-166 Lisbon, Portugal

¹⁰ Rheumatology Department, Centro Hospitalar de Lisboa Ocidental | Egas Moniz Hospital, Rua da Junqueira, 126, 1349-019 Lisbon, Portugal



Publisher's note Springer Nature remains neutral with regard to jurisdictional claims in published maps and institutional affiliations.